

Cleco

ASSEMBLY TOOLS



Cleco | Tame the Line

SHOWN: CELLCLUTCH

ASSEMBLY TOOLS

COUNT ON **CLECO CORDLESS ASSEMBLY TOOLS** WHEN MOBILITY IS ESSENTIAL.

Cleco cordless assembly tools are designed for maximum mobility. Cleco offers the ability to run up to 16 cordless assembly tools from one global controller, a savings of up to 50% over traditional systems. Cleco Cordless nutrunners have been designed to provide wireless connectivity in manufacturing environments. The flexibility of a wireless tool in safety critical applications can greatly improve operator productivity.



THE SMARTEST TOOL FOR THE **TOUGHEST ENVIRONMENT.**

The new CellCore™ cordless assembly tools are smart, durable and designed to withstand the toughest environments. The lightweight ergonomic design reduces operator fatigue while delivering state-of-the-art power, weight and balance. A large user interface makes it quick and easy to program rundowns on the tool without a controller. CellCore puts you in control with cordless assembly tools that are easy to handle, and hard to break.

CLECO'S LIVEWIRE™ 2 TOOLS ARE **STRONGER, LIGHTER, AND LONG LASTING.**

LiveWire™ 2 tools perform up to 1700 rundowns on a single battery charge and can run up to 500,000 cycles between maintenance. The second generation of LiveWire 2 tools is lighter than the original, has a compact design, and still maintains the same operator-friendly interface and precision performance you've come to know from Cleco.



CellClutch®

Simplicity and intelligence merge with our newest innovation in cordless tools. CellClutch delivers torque control for functional joints, programmable with up to seven stages to prevent cross thread errors, has RPM speed control and provides repeatability and fastening accuracy during the assembly tightening process.



Quick Tool Installation

Setting the preferred torque is a quick and easy 3-step process: Complete a rundown, read the torque and make adjustments, complete another rundown to verify required torque is met.

Software Included at No Extra Charge

Reduce total cost of ownership with CellClutch software included with tool purchase.



Improved Visibility

Built-in LED worklight illuminates the work surface to reduce strain.

Powered by the Milwaukee® M18 Red Lithium battery platform and available in WiFi/Bluetooth connected versions, CellClutch tools can seamlessly communicate with the Cleco mPro™ line of controllers using both WiFi (2.4 & 5 GHz) and Bluetooth v4.2 (Low Energy and BR/EDR wireless communication) in a single convenient tool. With CellClutch, tool intelligence has never been so simple.



Accuracy

CM > 1.67 within a +/- 10% tolerance range

Speed Control

Easily change the tool's RPM settings to meet the required application requirements.

Ergonomic

Lightweight, cordless design eliminates the need for bulky cords and hoses.

Connected Advantage*

WiFi (2.4 & 5 GHz) and Bluetooth v4.2 (Low Energy and BR/EDR wireless communication) connected for easy-to-program setting adjustments, live reporting, traceability, and batch counting through the mPro controller platform.

* Available in Connected version only, mPro controller sold separately.

*Bluetooth is a registered trademark owned by Bluetooth SIG, Inc.

CellClutch Connect - Cordless Electric - Pistol

CellClutch® Cordless Assembly Tools deliver simple, programmable torque control to your line.

- Reduced Operator Error - Pre-set torque, “ok” “not ok” green and red lights make tool operation simple.
- Eliminate cross threads and errors during rundowns with programmable speeds and strategies.
- Eliminate Over Torque Damage - Contactless electronic switch shuts off tightening rotation when set torque is reached.
- Reliable Single Battery Platform - Milwaukee® M18 Red Lithium battery can be used across the entire Cleco cordless range to reduce complexity and costs in your plant.
- WiFi (2.4 & 5 GHz) and Bluetooth v4.2 (Low Energy and BR/EDR) wireless communication for easy-to-program setting adjustments, live reporting, traceability, and batch counting through the mPro controller platform.
- *Available in Connected version only, mPro Controller sold separately
- *Bluetooth is a registered trademark owned by Bluetooth SIG, Inc.
- Speed Control - Easily change the tool’s RPM settings to meet the required application requirements.
- Ergonomic - Lightweight, cordless design eliminates the need for bulky cords and hoses.
- Improved Visibility - Built-in LED worklight illuminates the work surface to reduce strain.
- Software Included At No Extra Charge - Reduce total cost of ownership with CellClutch software included with tool purchase.
- Accuracy – CM 1.67 within a +/- 10% tolerance range



Model	Torque Range				Free Speed (rpm)	Weight	
	Min Nm	Max Nm	Min Ft Lb	Max Ft Lb		Lb	kg
CLBPW04Q-00	1.1	4.0	0.8	2.9	1500 r/min	2.4	1.1
CLBPW04Q-CN	1.1	4.0	0.8	2.9	1500 r/min	2.4	1.1
CLBPW04Q-EU	1.1	4.0	0.8	2.9	1500 r/min	2.4	1.1
CLBPW04Q-NA	1.1	4.0	0.8	2.9	1500 r/min	2.4	1.1
CLBPW08Q-00	2.1	8.0	1.5	5.9	985 r/min	2.4	1.1
CLBPW08Q-CN	2.1	8.0	1.5	5.9	985 r/min	2.4	1.1
CLBPW08Q-EU	2.1	8.0	1.5	5.9	985 r/min	2.4	1.1
CLBPW08Q-NA	2.1	8.0	1.5	5.9	985 r/min	2.4	1.1
CLBPW12Q-00	3.2	12.0	2.4	8.8	700 r/min	2.4	1.1
CLBPW12Q-CN	3.2	12.0	2.4	8.8	700 r/min	2.4	1.1
CLBPW12Q-EU	3.2	12.0	2.4	8.8	700 r/min	2.4	1.1
CLBPW12Q-NA	3.2	12.0	2.4	8.8	700 r/min	2.4	1.1

Note: Connected tools are region-specific. To avoid Wi-Fi or connectivity issues, make sure to order the correct model number for the region where the tool will be used.
 NA=North America, EU=Europe, CH=China; 00=Rest of World

CellClutch Connect- Cordless Electric - Right Angle

CellClutch® Cordless Assembly Tools deliver simple, programmable torque control to your line.

- Reduced Operator Error - Pre-set torque, “ok” “not ok” green and red lights make tool operation simple.
- Eliminate cross threads and errors during rundowns with programmable speeds and strategies.
- Eliminate Over Torque Damage - Contactless electronic switch shuts off tightening rotation when set torque is reached.
- Reliable Single Battery Platform - Milwaukee® M18 Red Lithium battery can be used across the entire Cleco cordless range to reduce complexity and costs in your plant.
- Quick Tool Installation - Setting the preferred torque is a quick and easy 3-step process: Complete a rundown, read the torque and make adjustments, complete another rundown to verify required torque is met.
- WiFi (2.4 & 5 GHz) and Bluetooth v4.2 (Low Energy and BR/EDR) wireless communication for easy-to-program setting adjustments, live reporting, traceability, and batch counting through the mPro controller platform.
- *Available in Connected version only, mPro Controller sold separately
- *Bluetooth is a registered trademark owned by Bluetooth SIG, Inc.
- Speed Control - Easily change the tool’s RPM settings to meet the required application requirements.
- Ergonomic - Lightweight, cordless design eliminates the need for bulky cords and hoses.
- Improved Visibility - Built-in LED worklight illuminates the work surface to reduce strain.
- Software Included At No Extra Charge - Reduce total cost of ownership with CellClutch software included with tool purchase.
- Accuracy – CM 1.67 within a +/- 10% tolerance range



Model	Torque Range				Free Speed (rpm)	Weight	
	Min Nm	Max Nm	Min Ft Lb	Max Ft Lb		Lb	kg
CLBAW203-CN							
CLBAW303-CN							
CLBAW653-00	15.9		11.7	47.9	115 r/min	4.3	2.0
CLBAW083-00	2.2	8	1.6	5.9	915 r/min	3.3	1.5
CLBAW083-CN	2.2	8	1.6	5.9	915 r/min	3.3	1.5
CLBAW083-EU	2.2	8	1.6	5.9	915 r/min	3.3	1.5
CLBAW083-NA	2.2	8	1.6	5.9	915 r/min	3.3	1.5
CLBAW123-00	3.3	12	2.4	8.8	650 r/min	3.3	1.5
CLBAW123-CN	3.3	12	2.4	8.8	650 r/min	3.3	1.5
CLBAW123-EU	3.3	12	2.4	8.8	650 r/min	3.3	1.5
CLBAW123-NA	3.3	12	2.4	8.8	650 r/min	3.3	1.5
CLBAW203-00	8.3	21	6.1	15.5	360 r/min	3.9	1.8
CLBAW203-EU	8.3	21	6.1	15.5	360 r/min	3.9	1.8
CLBAW203-NA	8.3	21	6.1	15.5	360 r/min	3.9	1.8
CLBAW303-00	8.3	30	6.1	22.1	255 r/min	3.9	1.8
CLBAW303-EU	8.3	30	6.1	22.1	255 r/min	3.9	1.8
CLBAW303-NA	8.3	30	6.1	22.1	255 r/min	3.9	1.8
CLBAW403-00	15.1	41	11.1	30.2	185 r/min	4.1	1.9
CLBAW403-CN	15.1	41	11.1	30.2	185 r/min	4.1	1.9
CLBAW403-EU	15.1	41	11.1	30.2	185 r/min	4.1	1.9
CLBAW403-NA	15.1	41	11.1	30.2	185 r/min	4.1	1.9
CLBAW653-CN	15.9	65	11.7	47.9	115 r/min	4.3	2
CLBAW653-EU	15.9	65	11.7	47.9	115 r/min	4.3	2
CLBAW653-NA	15.9	65	11.7	47.9	115 r/min	4.3	2

Note: Connected tools are region-specific. To avoid Wi-Fi or connectivity issues, make sure to order the correct model number for the region where the tool will be used.

NA=North America, EU=Europe, CH=China; 00=Rest of World

CellClutch - Cordless Electric - Pistol

CellClutch® Cordless Assembly Tools deliver simple, programmable torque control to your line.

- Reduced Operator Error - Pre-set torque, “ok” “not ok” green and red lights make tool operation simple.
- Eliminate cross threads and errors during rundowns with programmable speeds and strategies.
- Eliminate Over Torque Damage - Contactless electronic switch shuts off tightening rotation when set torque is reached.
- Reliable Single Battery Platform - Milwaukee® M18 Red Lithium battery can be used across the entire Cleco cordless range to reduce complexity and costs in your plant.
- Quick Tool Installation - Setting the preferred torque is a quick and easy 3-step process: Complete a rundown, read the torque and make adjustments, complete another rundown to verify required torque is met.
- Speed Control - Easily change the tool’s RPM settings to meet the required application requirements.
- Ergonomic - Lightweight, cordless design eliminates the need for bulky cords and hoses.
- Improved Visibility - Built-in LED worklight illuminates the work surface to reduce strain.
- Software Included At No Extra Charge - Reduce total cost of ownership with CellClutch software included with tool purchase.
- Accuracy – CM 1.67 within a +/- 10% tolerance range



Model	Torque Range				Free Speed (rpm)	Weight	
	Min Nm	Max Nm	Min Ft Lb	Max Ft Lb		Lb	kg
CLBP04Q	1.1	4.0	0.8	2.9	1500 r/min	2.4	1.1
CLBP08Q	2.1	8.0	1.5	5.9	985 r/min	2.4	1.1
CLBP12Q	3.2	12.0	2.4	8.8	700 r/min	2.4	1.1

CellClutch - Cordless Electric - Right Angle

CellClutch® Cordless Assembly Tools deliver simple, programmable torque control to your line.

- Reduced Operator Error - Pre-set torque, “ok” “not ok” green and red lights make tool operation simple.
- Eliminate cross threads and errors during rundowns with programmable speeds and strategies.
- Eliminate Over Torque Damage - Contactless electronic switch shuts off tightening rotation when set torque is reached.
- Reliable Single Battery Platform - Milwaukee® M18 Red Lithium battery can be used across the entire Cleco cordless range to reduce complexity and costs in your plant.
- Quick Tool Installation - Setting the preferred torque is a quick and easy 3-step process: Complete a rundown, read the torque and make adjustments, complete another rundown to verify required torque is met.
- Speed Control - Easily change the tool’s RPM settings to meet the required application requirements.
- Ergonomic - Lightweight, cordless design eliminates the need for bulky cords and hoses.
- Improved Visibility - Built-in LED worklight illuminates the work surface to reduce strain.
- Software Included At No Extra Charge - Reduce total cost of ownership with CellClutch software included with tool purchase.
- Accuracy – CM 1.67 within a +/- 10% tolerance range



Model	Torque Range				Free Speed (rpm)	Weight	
	Min Nm	Max Nm	Min Ft Lb	Max Ft Lb		Lb	kg
CLBA083	2.2	8	1.6	5.9	915 r/min	3.3	1.5
CLBA123	3.3	12	2.4	8.8	650 r/min	3.3	1.5
CLBA203	8.3	21	6.1	15.5	360 r/min	3.9	1.8
CLBA303	8.3	30	6.1	22.1	255 r/min	3.9	1.8
CLBA403	15.1	41	11.1	30.2	185 r/min	4.1	1.9
CLBA653	15.9	65	11.7	47.9	115 r/min	4.3	2

Introducing:

CellTek™

Cordless Assembly Tools

Safety/Accuracy
Repeatability of 2.0 cm/cmK @ +/- 7% accuracy for safety critical joints

FEEL THE FUTURE OF CONNECTIVITY

Cleco's new CellTek™ Cordless Assembly Tools bring superior connectivity, with the most reliable real-time synchronization with manufacturing and engineering systems. Designed to ensure safety-critical assembly with best-in-class accuracy, they are also the fastest cordless assembly tools in its class.



Multi-Color LED
Work light for secondary "ok/not ok" operator feedback while also illuminating your workpiece

Designed to enable the **Smart Factory of Tomorrow**, Cleco introduces the **most advanced cordless nutrunner, CellTek.**



Connectivity - The most reliable real-time synchronization with manufacturing and engineering systems



Speed - Improve your production time with the fastest cordless assembly tools in its class



Ergonomic - Sleek and lightweight for the ultimate in comfort and balance



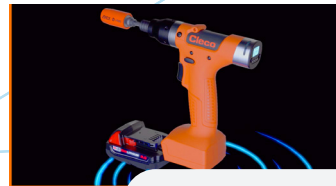
Accurate - Ensures safety-critical assembly with best-in-class accuracy and repeatability

FEEL THE FUTURE OF CONNECTIVITY



Decreased Takt Times

Patented motor technology allows increased speeds over other battery platforms



Stay Alive Function

Prevents reboot during battery change, gaining time and efficiency



Flexible

Easily connects over Wifi (2.4 & 5.0 GHz) or Bluetooth 4.0



CellTek - Cordless Electric - Pistol

Designed to ensure safety-critical assembly with best-in-class accuracy, they are also the fastest cordless assembly tools in its class.



- Connectivity - The most reliable realtime synchronization with manufacturing and engineering systems
- Speed - Improve your production time with the fastest cordless assembly tools in its class
- Ergonomic - Sleek and lightweight for the ultimate in comfort and balance
- Accurate - Ensures safety-critical assembly with best-in-class accuracy and repeatability

Model	Torque Range				Free Speed (rpm)	Weight		Output Drive
	Min Nm	Max Nm	Min Ft Lb	Max Ft Lb		Lb	kg	
CTBPW05Q	1.1	4.9	0.8	3.6	3525 r/min	2.0	0.90	1/4" Quick Change
CTBPW10Q	2.4	10.0	1.8	7.4	1600 r/min	2.1	0.95	1/4" Quick Change
CTBPW15Q	3.4	14.4	2.5	10.6	1125 r/min	2.1	0.95	1/4" Quick Change

Values do not include battery.
2ah Battery weighs 0.43kg. 5ah Battery weighs 0.72kg.

CellTek - Cordless Electric - Right Angle

Designed to ensure safety-critical assembly with best-in-class accuracy, they are also the fastest cordless assembly tools in its class.

- Connectivity - The most reliable realtime synchronization with manufacturing and engineering systems
- Speed - Improve your production time with the fastest cordless assembly tools in its class
- Ergonomic - Sleek and lightweight for the ultimate in comfort and balance
- Accurate - Ensures safety-critical assembly with best-in-class accuracy and repeatability



Model	Torque Range				Free Speed (rpm)	Weight		Output Drive
	Min Nm	Max Nm	Min Ft Lb	Max Ft Lb		Lb	kg	
CTBAW153	3.6	15.0	2.7	11.1	1025 r/min	3.1	1.40	3/8" Square Drive
CTBAW213	5.2	21.0	3.8	15.5	735 r/min	3.1	1.40	3/8" Square Drive
CTBAW273	6.8	27.0	5.0	19.9	560 r/min	3.1	1.40	3/8" Square Drive
CTBAW383	10.0	38.0	7.4	28.0	395 r/min	3.4	1.55	3/8" Square Drive
CTBAW503	13.0	50.0	9.6	36.9	285 r/min	3.5	1.60	3/8" Square Drive
CTBAW653	17.0	65.0	12.5	47.9	220 r/min	3.7	1.70	3/8" Square Drive

Values do not include battery.
2ah Battery weighs 0.43kg. 5ah Battery weighs 0.72kg.

CellCore™ puts you in control with cordless assembly tools that are **easy to handle**, and **hard to break**.

Cleco's new CellCore™ Cordless Assembly Tools are smart, durable and designed to withstand the toughest environments. The lightweight ergonomic design reduces operator fatigue while delivering state-of-the-art power, weight and balance. A large user interface makes it quick and easy to program rundowns on the tool without a controller.



Durable - Assembly line tough
(Drop tested up to 5 feet)



Reliable - Increases uptime with 500k cycles between maintenance



Ergonomic - Reduces operator fatigue while delivering state-of-the-art power and intelligence



Easy to Use - Large user interface allows easy on-the-tool programming without a controller

EASY TO HANDLE. HARD TO BREAK.



CellCore is the most versatile, easy-to-use cordless tool in the industry.

Users can program up to 10 rundown strategies, called “FastApps”, directly on the tool in standalone mode. Users can also pair CellCore tools with Cleco’s new mPro200 controller. By pairing the devices, users can easily capture data in real time and program advanced rundowns within a much more compact footprint.

THE SMARTEST TOOL FOR THE TOUGHEST ENVIRONMENT

Multi-Color LED - Color worklight on the tool for secondary okay/not okay visual feedback

Large User Interface - Allows easy on-the-tool programming without a controller

10 "Fast Apps" Programmable Rundown Strategies

Versatile - Forward and backward compatibility with Cleco's entire Global Controller platform

Exceptional Low Weight, Balance and Grip - For superior ergonomics that increase productivity

Increased Storage - No uploading rundowns for up to one week (storage for 15,000 rundowns, 500 traces)

"Stay Alive" Function - Prevents reboot during battery change, gaining time and efficiency

CellCore High Torque



- FastApps** - Program up to 10 applications directly on the tool or connect to a controller for maximum functionality
- Versatile** - 40-2000Nm range allowing more flexibility in your tool
- Reliable** - Norbar® torque multiplier provides proven accuracy and quality
- Access** - 360° rotating head and handle for maximum accessibility

**ALL
NEW**

CellCore - Cordless Electric - Pistol

Assembly line tough, designed for Quality Critical Applications and programming on the tool

- Durable - Assembly line tough (Drop tested up to 5 feet!)
- Reliable - Increases uptime with 500k cycles between maintenance
- Ergonomic - Reduces operator fatigue while delivering state-of-the-art power and intelligence
- Easy to Use - Large user interface allows easy on-the-tool programming without a controller



Model	Torque Range				Free Speed (rpm)	Weight		Output Drive
	Min Nm	Max Nm	Min Ft Lb	Max Ft Lb		Lb	kg	
CCBPW04Q	1.2	4	0.9	2.9	2480 r/min	2.16	0.98	1/4" Quick Change
CCBPW123	3.6	12	2.7	8.8	800 r/min	2.32	1.05	3/8" Square Drive
CCBPW12Q	3.6	12	2.7	8.8	800 r/min	2.32	1.05	1/4" Quick Change
CCBPW223	6.6	22	4.9	16.2	430 r/min	2.32	1.05	3/8" Square Drive
CCBPW22Q	6.6	22	4.9	16.2	430 r/min	2.32	1.05	1/4" Quick Change

Values do not include battery.
2ah Battery weighs 0.43kg. 5ah Battery weighs 0.72kg.

CellCore - Cordless Electric - Right Angle

Assembly line tough, designed for Quality Critical Applications and programming on the tool

- Durable - Assembly line tough (Drop tested up to 5 feet)
- Reliable - Increases uptime with 500k cycles between maintenance
- Ergonomic - Reduces operator fatigue while delivering state-of-the-art power and intelligence
- Easy to Use - Large user interface allows easy on-the-tool programming without a controller



Model	Torque Range				Free Speed (rpm)	Weight		Output Drive
	Min Nm	Max Nm	Min Ft Lb	Max Ft Lb		Lb	kg	
CCBAW153	4.5	15	3.3	11.0	570 r/min	3.75	1.70	3/8" Square Drive - Pin Detent
CCBAW15B	4.5	15	3.3	11.0	570 r/min	3.75	1.70	3/8" Square Drive - Ball Retainer
CCBAW253	7.5	25	5.5	18.4	305 r/min	3.75	1.70	3/8" Square Drive - Pin Detent
CCBAW25B	7.5	25	5.5	18.4	305 r/min	3.75	1.70	3/8" Square Drive - Ball Retainer
CCBAW353	10.5	35	7.7	25.8	255 r/min	4.3	1.95	3/8" Square Drive - Pin Detent
CCBAW35B	10.5	35	7.7	25.8	255 r/min	4.3	1.95	3/8" Square Drive - Ball Retainer
CCBAW503	15	50	11.1	36.8	165 r/min	4.41	2.00	3/8" Square Drive - Pin Detent
CCBAW50B	15	50	11.1	36.8	165 r/min	4.41	2.00	3/8" Square Drive - Ball Retainer

Values do not include battery.
2ah Battery weighs 0.43kg.
5ah Battery weighs 0.72kg.

CellCore – Cordless Electric – High Torque

Assembly line tough, designed for High Torque Applications and programming on the tool

- FastApps – Program up to 10 applications directly on the tool or connect to a controller for maximum functionality
- Versatile – 40-2000 Nm range allowing more flexibility in your tool
- Reliable – Norbar® torque multiplier provides proven accuracy and quality
- Access – 360° rotating head and handle for maximum accessibility



Model	Torque Range				Free Speed (rpm)	Weight		Output Drive
	Min Nm	Max Nm	Min Ft Lb	Max Ft Lb		Lb	kg	
CCBPWN200D6	39	195	29.5	143.8	42 r/min	7.41	3.36	3/4" Square Drive
CCBAWN225NB6	45	225	33.2	166	34 r/min	10.3	4.7	3/4" Square Drive
CCBPWN500D6	119	500	87.8	368.8	14 r/min	7.41	3.36	3/4" Square Drive
CCBAWN750NB6	154	750	113.6	553.2	11 r/min	11.0	5.0	3/4" Square Drive
CCBAWN1000NB6	200	1000	147.5	737.6	7 r/min	11.0	5.0	3/4" Square Drive
CCBPWN1000D6	214	1000	157.8	737.6	8 r/min	14.73	6.68	3/4" Square Drive
CCBPWN1350D8	293	1350	216	995.7	6 r/min	14.73	6.68	1" Square Drive
CCBPWN2000D8	436	2000	321.6	1475	4 r/min	14.73	6.68	1" Square Drive

Values do not include battery.
2ah Battery weighs 0.43kg.
5ah Battery weighs 0.72kg.

Batteries

Batteries for Cordless Tools

- Smart Lithium-Ion Battery pack for the complete Cleco Cordless product line
- 2.0 Ah 18V and 5.0 Ah 18V options

Model	Description
T50-1000497	18V, 2.0Ah Battery (.43kg/.94lb)
T50-1000498	18V, 5.0Ah Battery (.72kg/1.60lb)



Chargers

Chargers for Batteries

- Battery Charger for 18V batteries

Model	Description
T50-1000499	18V Rapid Charger (110V NA)
T50-1000500	18V 6-Bay Sequential Charger (110V NA)
T50-1000506	18V Rapid Charger (220V EMEA)
T50-1000507	18V Charger (Brazil)
T50-1000508	18V 6-Bay Sequential Charger (220V EMEA)
T50-1000543	18V Charger (Argentina)
T50-1000544	18V Rapid Charger (UK)
T50-1000545	18V Rapid Charger (PRC)
T50-1000546	18V Rapid Charger (JP)
T50-1000547	18V 6-Bay Sequential Charger (UK)



CellCore Protective Tool Covers

Protective Scratch Covers for Cellcore

- CellCore clear PVC protective covers protect your tool and your workpiece
- CellCore Pistol cover protects the tool body, screen and buttons; Right Angle cover protects the nutrunner head

Model
T50-1000656
T50-1000657
T50-1000658
T50-1000659
T50-1000660



CellClutch Pistol ID rings

- Color identification ring for Cleco CellClutch pistol tool
- Sold in pack of five (5)



Model
CellClutch Pistol ID Ring 5 Pack - Black
CellClutch Pistol ID Ring 5 Pack - Blue
CellClutch Pistol ID Ring 5 Pack - Green
CellClutch Pistol ID Ring 5 Pack - Grey
CellClutch Pistol ID Ring 5 Pack - Red
CellClutch Pistol ID Ring 5 Pack - Yellow

CellClutch Right Angle ID Rings

- Color identification ring for Cleco CellClutch right angle tool
- Sold in pack of five (5)

Model
CellClutch RA ID Ring 5 Pack - Black
CellClutch RA ID Ring 5 Pack - Blue
CellClutch RA ID Ring 5 Pack - Green
CellClutch RA ID Ring 5 Pack - Grey
CellClutch RA ID Ring 5 Pack - Red
CellClutch RA ID Ring 5 Pack - Yellow

Torque Analyzer

Up to 68Nm/50 ftlbs use with Electric, Pneumatic Clutch Stall and Pulse and Manual Electronic and Click Torque Wrenches

- Choice of measurement modes including track, peak, pulse, and click
- Memory for 999 date- and time-stamped readings for complete traceability
- 3-color LED indication of torque measurement status
- Easy-to-operate for fast and accurate torque readings and assembly tool auditing
- Automatically switches to highest voltage power source (main/USB/battery)
- Clear, easy-to-read white OLED screen for basic torque data readings and alerts



Model	Description	Torque Range Max	
		Ft Lb	Nm
CJK38	Dynamic Joint Kit for use with 68Nm Stationary Transducer	50	68
CST6838	68 Nm Stationary Transducer	50	68
CTA0414	0.4-4 Nm Torque Analyzer	3	4
CTA3038	3.0-30Nm Torque Analyzer	22	30

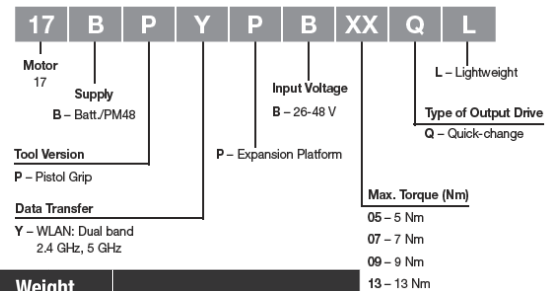
LiveWire 2 - 17 Series - Cordless Electric - Pistol

Lightweight pistol tool designed for safety critical applications



- Accurate - Designed for safety critical applications with a CM/CMK of 2.0 at +/- 7% accuracy
- Economical - Save money, time and space by pairing up to 16 tools to just one Mpro Controller
- Ergonomic - Reduce operator fatigue with lighter, ergonomic tools
- Reliable - Increase uptime with 500k cycles between maintenance periods
- Interchangeable - Decrease downtime by swapping tools quickly on the assembly line with the LiveWire memory chip

Pistol grip nutrunner nomen



Model	Torque Range				Free Speed		Length	Weight		Output Drive
	Min Nm	Max Nm	Min Ft Lb	Max Ft Lb	r/min (26V)	r/min (44V)	In (26V)	Lb	kg	
17BPYPB05QL	3.0	5.0	2.2	3.7	1639	2428	8.4	2.8	1.26	1/4" Quick Change
17BPYPB07QL	3.0	7.0	2.2	5.2	1161	1721	8.4	2.77	1.26	1/4" Quick Change
17BPYPB09QL	3.0	9.0	2.2	6.6	887	1314	8.4	2.8	1.26	1/4" Quick Change
17BPYPB13QL	3.0	13.0	2.2	9.6	629	931	8.4	2.77	1.26	1/4" Quick Change

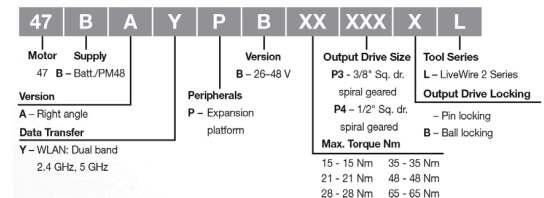
General:
All tools must be used with an approved Cleco tightening controller or suitable PC software.
Battery weights: 26 V Li-Ion 1.1lbs. (0.50kg), 44 V Li-Ion 1.9 lbs. (0.85kg).
The 44 V battery is 19mm/.705" shorter than the 26V battery.
Extra Equipment:
Scanner, sockets, batteries, and chargers must be ordered separately.

LiveWire 2 - 47 Series - Cordless Electric - Right Angle

Lightweight Right angle tool designed for safety critical applications



- Accurate - Designed for safety critical applications with a CM/CMK of 2.0 at +/- 7% accuracy
- Economical - Save money, time and space by pairing up to 16 tools to just one Mpro Controller
- Ergonomic - Reduce operator fatigue with lighter, ergonomic tools
- Reliable - Increase uptime with 500k cycles between maintenance periods
- Interchangeable - Decrease downtime by swapping tools quickly on the assembly line with the LiveWire memory chip



Model	Torque Range				Free Speed		Length	Weight		Output Drive
	Min Nm	Max Nm	Min Ft Lb	Max Ft Lb	r/min (26V)	r/min (44V)	In (26V)	Lb	kg	
47BAYPB15P3L	5.5	15	4.06	11.1	487	891	22.9	4.03	1.83	3/8" Square Drive
47BAYPB21P3L	8	21	5.9	15.5	370	680	22.9	4.03	1.83	3/8" Square Drive
47BAYPB28P3L	10	28	7.4	20.7	264	482	22.9	4.03	1.83	3/8" Square Drive
47BAYPB35P3L	12	35	8.9	25.8	255	446	23.0	4.14	1.88	3/8" Square Drive
47BAYPB48P3L	18	48	13.3	35.4	181	316	23.5	4.34	1.97	3/8" Square Drive
47BAYPB65P4L	15	65	11.1	47.9	135	236	23.54	4.56	2.07	3/8" Square Drive

General:
All tools must be used with an approved Cleco tightening controller or suitable PC software.
Battery weights: 26 V Li-Ion 1.1lbs. (0.50kg), 44 V Li-Ion 1.9 lbs. (0.85kg). The 44 V battery is 19mm/.705" shorter than the 26V battery.
Extra Equipment:
Scanner, sockets, batteries, and chargers must be ordered separately.

High Torque LiveWire - 47 Series - Cordless Electric - Right Angle - Nutrunner

Right angle tool designed for safety critical applications

- Accurate - Designed for safety critical applications with a CM/CMK of 2.0 at +/- 7% accuracy
- Economical - Save money, time and space by pairing up to 16 tools to just one Mpro Controller
- Reliable - Increase uptime with 500k cycles between maintenance periods
- Interchangeable - Decrease downtime by swapping tools quickly on the assembly line with the LiveWire memory chip



Right angle nutrunner nomenclature

47	B	A	X	X	B	XX	XXX	X
Motor 47	Supply B - Batt./PM48				Input Voltage B - 26-48 V		Output Drive Size P3 - 3/8" Sq. dr. spiral geared P4 - 1/2" Sq. dr. spiral geared	Output Drive Locking - Pin locking B - Ball locking
Tool Version A - Right angle					Peripherals S - Barcode scanner - None			
Data Transfer Y - WLAN: Dual band					P - Expansion platform		Max. Torque (Nm) 15 - 15 Nm 21 - 21 Nm 28 - 28 Nm 35 - 35 Nm	

Model	Torque Range				Free Speed		Length		Weight		Output Drive
	Min Nm	Max Nm	Min Ft Lb	Max Ft Lb	r/min (26V)	r/min (44V)	In (26V)	Lb	kg		
47BAYPB70P4	24	70	17.7	51.7	123	216	27.2	9.2	4.18	1/2" Square Drive	
47BAYPB90P4	40	90	29.5	66.4	80	140	27.2	9.2	4.18	1/2" Square Drive	

General:
All tools must be used with an approved Cleco tightening controller or suitable PC software.
Battery weights: 26 V Li-Ion 1.1lbs. (0.50kg), 44 V Li-Ion 1.9 lbs. (0.85kg).
The 44 V battery is 19mm/.705" shorter than the 26V battery.
Extra Equipment: Scanner, sockets, batteries, and chargers must be ordered separately.

LiveWire - 47 Series - Cordless Electric - Inline

Inline tool designed for safety critical applications

- Accurate - Designed for safety critical applications with a CM/CMK of 2.0 at +/- 7% accuracy
- Economical - Save money, time and space by pairing up to 16 tools to just one Mpro Controller
- Reliable - Increase uptime with 500k cycles between maintenance periods
- Interchangeable - Decrease downtime by swapping tools quickly on the assembly line with the LiveWire memory chip



47	B	S	Y	B	XX	X
Motor 47	Supply B - Batt./PM48					Type of Output Drive D3 - Square 3/8" D4 - Square 1/2"
Tool Version S - Straight						Max. Torque (Nm) 10 - 10 Nm 15 - 15 Nm 30 - 30 Nm 45 - 45 Nm 60 - 60 Nm
Data Transfer Y - WLAN: Dual band 2.4 GHz, 5 GHz						Input Voltage B - 26-48 V

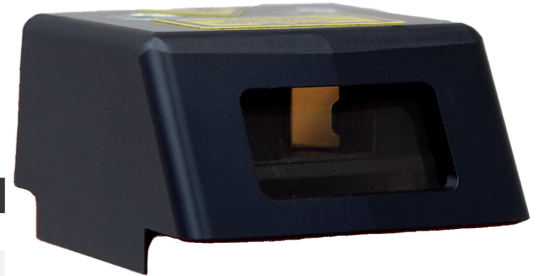
Model	Torque Range				Free Speed		Length		Weight		Output Drive
	Min Nm	Max Nm	Min Ft Lb	Max Ft Lb	r/min (26V)	r/min (44V)	In (26V)	Lb	kg		
47BSYB10D3	3	10	2.2	8.1	750	1375	20.3	3.9	1.80	3/8" Square Drive	
47BSYB15D3	5	15	3.6	11.8	570	1050	20.5	3.9	1.80	3/8" Square Drive	
47BSYB30D3	10	30	7.3	23.6	275	485	20.7	3.9	1.80	3/8" Square Drive	
47BSYB45D3	15	45	11	33.1	205	355	23.2	5.9	2.70	3/8" Square Drive	
47BSYB60D4	21	60	15.4	44.2	145	250	23.3	6.1	2.80	1/2" Square Drive	

General:
All tools must be used with an approved Cleco tightening controller or suitable PC software.
Battery weights: 26 V Li-Ion 1.1lbs. (0.50kg), 44 V Li-Ion 1.9 lbs. (0.85kg).
The 44 V battery is 19mm/.705" shorter than the 26V battery.
Extra Equipment:
Scanner, sockets, batteries, and chargers must be ordered separately.

Barcode Scanner for Platform & LiveWire 2 Tools

- Traceability - Link your rundown results to a serial number or VIN directly from the tool
- Compact - Eliminate external barcode scanners on the line

Model	Description
937240PT	Barcode Scanner Class 2 for LiveWire 2 and Platform tools
943045PT	2-D LED lightbar, green, IEC 60825: Class 2
962034PT	2-D Laser crosshair, IEC 60825: Class 2



Gyroscope for Platform & LiveWire 2 Tools

- Accurate - Eliminate operator influence and improve your CP/CPK by using an added gyroscope on the tool
- Compact - Gyroscope module is added directly to the top of the tool in a small package

Model
942039PT



LiveWire 44V Li-ion Battery

- 2.0 Ah High capacity battery
- Up to 83% faster vs. 26 V battery
- Charge level indicator on battery
- Automatic and manual deep sleep mode
- LCD Display indicating battery charge level and total charge cycles
- Single tab, one-hand removal

Model	Weight		Width mm	Depth mm
	Lb	kg		
961102PT	2.2	1.01	81	153



LiveWire Batteries & Chargers

Model	Weight (kg)	Width mm	Depth mm
	kg		
961101PT	0.69	81	122



LiveWire Battery Chargers

- Battery charger for 26V, 44V and dual charger
- Dual charger auto sensing 26V/44V technology
- 1 hour charge time
- Power and status LEDs

Model	Weight (kg)		Width		Depth	
		kg	mm	mm	mm	mm
935391			130		210	
962085PT	0.82		130		210	



Vmax PM48/PM48-LAN Power Module

- Provides a constant power source with speeds matching that of the 44 V battery
- Auto sensing input - (85 - 275 VAC)
- Power and status LEDs
- Electronic circuit protection



Vmax Tool Cable

Model	Weight		Width		Depth		Length	
	Lb	kg	in	mm	in	mm	in	mm
961350PT	6.8	3.10	9.4	240	5.9	150	4.7	120

2.4-5GHz Dual Band Access Point - NA

LiveWire Dual Band Access Points

- Industrial access point with up to 300 mbps speed on both 2.4 and 5.0 GHz
- Dual band allows great flexibility in a plant

Model
544249PT
961390
961453PT

Radio Range: 30-50 meters (XBEE 30 meters max.) IEEE 802.11 a/b/g (depending on tool)
 Max Tools: 16 (Contact Regional Support Center for requirements greater than 10)



Protective Tool Covers

- Scratch and impact covers protect your tool and your workpiece



Model

936424PT

936489PT

937210PT

937704PT

937706PT

937708PT

937711PT

Protective Tool Covers - EU

- Scratch and impact covers protect your tool and your workpiece



Model

936382

936383

936384

936385PT

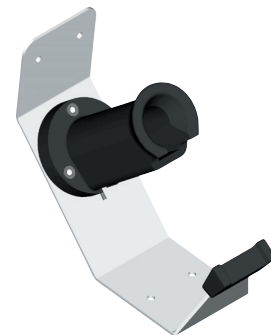
936386PT

936387

LiveWire Tool Holders & Controller Pairing Cords

- Tool holders with and without IRDA controller pairing devices built in

Model	Description	Length	Length
		ft	m
935144	Tool holder for pistol grip tools incl. IrDA		
935170	Infrared interface with cable	3.3	1
935290	Tool holder for right angle tools up to 50 Nm incl. IrDA		
935395	Tool holder for right angle tools up to 50 Nm		
935396	Tool holder for pistol grip tools		
935998	Tool holder for right angle tools from 70 Nm		
935999	Tool holder for right angle tools from 70 Nm incl. IrDA		



Tightening solutions for every application.



CLECO NEOTEK - 1 MILLION ACCURATE, REPEATABLE, MAINTENANCE-FREE CYCLES.

Engineered to last also means engineered to perform. Precision-hardened and ground spiral cut bevel and pinion gears equals zero preventative maintenance for 1 million cycles.

By providing class-leading repeatability of 2.0 Cm/Cmk @ +/- 7%, NeoTek™ is not only maintenance free, but worry free. The 1,000,000th rundown will be as secure as the first.





Cleco Corded Electric Nutrunners - the next generation of **smart tool solutions**.

Our corded electric assembly tools offer increased productivity, improved quality, and reduced downtime with real-time, data driven results for those assembly applications in which safety is critical.

Cost-effective solutions for safety-critical applications.

Cleco 30-70 series corded assembly tools are driven by a maintenance-free brushless motor. This motor technology coupled with our high-resolution resolved offers full range control for safety critical joints. The 30-70 series tools offer industry-proven gear trains for outstanding, durable performance.

Cleco 30-70 series nutrunners provide a unique modular assembly design for ease of repair. The on-board intelligent memory chip records tool set-up values and counts cycles for maintenance scheduling to prevent costly production downtime.



Workstation control with global integration.

The Cleco Hybrid Controller features a large touchscreen with an intuitive software interface that supports industry standard protocols, fieldbus communication, and the ability to manage up to 16 tools, cordless and corded.

Programming can be done directly from the controller or via a remote network connection, and the configurable architecture allows easy integration with your MES system.

Cost effectiveness is increased by simplifying system installation and decreasing complex process modifications.

NeoTek - 30 and 50 Series - Corded Electric - Transducer Control (0.9-84Nm) - Pistol

Ergonomic grip and light weight reduces operator fatigue to increase productivity.

- 1 Million Cycles Maintenance Free
- Repeatability & Accuracy with 2.0 Cm/Cmk at +/- 7%
- Configurable LED light rings
- Tactile & Audible Operator Feedback
- Programmable Multi-function Buttons



Model	Torque Range				Weight		Length	Side to Center
	Min Nm	Max Nm	Min Ft Lb	Max Ft Lb	Lb	kg	in	in
30EPN05BD2	0.9	4.7	0.66	3.47	2.05	0.93	7.76	0.64
30EPN05BDQ	0.9	4.7	0.66	3.47	2.01	0.91	8.27	0.64
30EPN12EAQ	3.9	11.6	2.88	8.56	2.20	1.00	9.02	0.64
30EPN12FA3	3.9	11.6	2.88	8.56	2.16	0.98	8.43	0.64
30EPN19FB3	3.9	19.0	2.88	14.01	2.20	1.00	8.43	0.64
30EPN26FB3	5.1	26.0	3.76	19.18	2.20	1.00	8.43	0.64
50EPN28FD3	5.6	28.0	4.13	20.65	3.48	1.58	10.08	0.64
50EPN43GD3	9.0	43.0	6.64	31.72	3.64	1.65	10.24	0.74
50EPN65HD4	14.0	66.0	10.33	48.68	4.72	2.14	11.34	0.87
50EPN85JD4	17.0	84.0	12.54	61.96	4.89	2.22	11.89	0.87
50EPN125KD4	25.0	123.0	18.44	90.72	5.78	2.62	12.32	1.10

NeoTek - 30 and 50 Series - Corded Electric - Transducer Control - Right Angle (1.3-205 Nm)

1 million cycles maintenance free and customizable features to fit any application. Light weight and ergonomic design for applications up to 205 Nm.

- Engineered to provide 1 million cycles maintenance-free
- Repeatability & accuracy of 2.0 Cm/Cmk at +/- 7%
- 1.3 Nm to 205Nm Torque range
- 3/8, 1/2" and 3/4" square output drive
- Configurable LED light ring



Model	Torque Range				Weight		Length	Side to Center	Head Height
	Min Nm	Max Nm	Min Ft Lb	Max Ft Lb	Lb	kg	in	in	in
30EAN06EA3	1.3	6	.9	4.4	2.5	1.13	14.96	.48	1.42
30EAN12EA3	2.6	12	1.9	8.8	2.5	1.14	14.96	.48	1.42
30EAN21FA3	4.4	21	3.2	15.4	2.9	1.32	16.06	.65	1.58
30EAN28FA3	5.7	28	4.2	20.6	2.9	1.32	16.06	.65	1.58
50EAN30FA3	6.0	30	4.4	22.1	3.5	1.60	17.68	.65	1.58
50EAN39GA3	8.0	39	5.9	28.7	3.9	1.77	18.19	.66	1.76
50EAN59HA3	12	59	8.8	43.5	4.3	1.94	18.27	.75	2.02
50EAN80JA4	16	80	11.8	59.0	4.8	2.17	18.62	.90	1.91
50EAN110KA4	22	109	16.2	80.3	6.5	2.76	19.41	1.00	2.37
50EAN150KB4	32	150	23.6	110.6	8.3	3.75	22.01	1.03	2.54
50EAN205NA6	41	205	30.2	151.2	8.7	3.93	22.13	1.16	2.44

NeoTek - 30 and 50 Series Corded Electric - Transducer Control - Inline (.9-84Nm)

High speed and accuracy for applications up to 26 Nm. Mounts easily with machined splines and locknut.

- 1 Million Cycles Maintenance Free
- Repeatability & Accuracy with 2.0 Cm/Cmk at +/- 7%
- Configurable LED light rings
- Tactile & Audible Operator Feedback
- Programmable Multi-function Buttons



Model	Torque Range				Weight		Length	Side to Center
	Min Nm	Max Nm	Min Ft Lb	Max Ft Lb	Lb	kg	in	in
30ESN05BD2	0.9	4.7	0.66	3.47	2.12	0.96	13.27	0.64
30ESN05BDQ	0.9	4.7	0.66	3.47	2.12	0.96	13.46	0.64
30ESN12EAQ	3.9	11.6	2.88	8.56	2.34	1.06	14.21	0.64
30ESN12FA3	3.9	11.6	2.88	8.56	2.34	1.06	14.05	0.64
30ESN19FB3	3.9	19.0	2.88	14.01	2.34	1.06	14.05	0.64
30ESN26FC3	5.1	26.0	3.76	19.18	2.34	1.06	14.05	0.64
50ESN28FD3	5.6	28.0	4.13	20.65	2.98	1.35	15.70	0.64
50ESN43GD3	9.0	43.0	6.64	31.72	3.64	1.65	15.86	0.74
50ESN65HD4	14.0	66.0	10.33	48.68	4.19	1.90	17.12	0.86
50ESN85JD4	17.0	84.0	12.54	61.96	4.41	2.00	17.67	0.86
50ESN125KD4	25.0	123.0	18.44	90.72	5.29	2.40	18.11	1.10

NeoTek - 70 Series - Corded Electric - Transducer Control - (23-4000 Nm) Inline and Right Angle

Durability and unsurpassed RPM for high torque applications up to 4000 Nm

- Repeatability & Accuracy with 2.0 Cm/Cmk at +/- 7%
- Configurable LED light rings
- Flexible high torque solutions
- 60% speed increase over current legacy series tools



Model	Torque Range				Weight		Length	Side to Center
	Min Nm	Max Nm	Min Ft Lb	Max Ft Lb	Lb	kg	in	in
70ESN95ND6	23.0	93.0	16.96	68.59	11.46	5.20	22.28	1.30
70ESN130ND6	31.0	124.0	22.86	91.46	11.46	5.20	22.28	1.30
70EAN155NA6	39.0	156.0	28.76	115.06	14.33	6.50	25.07	1.16
70ESN185ND6	46.0	184.0	33.9	135.7	11.46	5.20	22.28	1.30
70EAN205NA6	52.0	205.0	38.35	151.20	14.33	6.50	25.07	1.16
70EAN240PA6	60.0	239.0	44.25	176.28	15.43	7.00	25.78	1.49
70ESN245ND6	61	245.0	45.73	180.70	11.46	5.20	22.28	1.30
70EAN350PA6	88.0	350.0	64.91	258.15	15.43	7.00	25.78	1.49
70ESN355SD8	89.0	354.0	65.6	261.0	16.76	7.60	24.01	1.49
70ESN475SD8	118.0	473.0	87.03	348.87	16.76	7.60	24.01	1.49
70EAN600SA8T	125.0	600.0	92	443	23.9	10.8	26.50	2.10
70ESN700SD8	175.0	700.0	129.07	516.29	16.76	7.60	24.01	1.49
70EAN800TA8MT	200.0	800.0	148	590	25.5	11.6	25.90	1.60
70ESN850SD8	213.0	850.0	157.10	626.93	16.76	7.60	24.01	1.49
70EAN1500TA8MT	375.0	1500.0	277	1106	25.5	11.6	25.90	1.60
70ESN1500TA8T	425.0	1500.0	313.0	1106	19.2	8.70	24.40	1.60
70EAN2000TB8MT	500.0	2000.0	369	1475	32.4	14.7	26.60	2.30
70ESN2000TA8T	775.0	2000.0	572.0	1475	19.2	8.70	24.40	1.60
70EAN4000UA12MT	1250.0	4000.0	922	2950	41.6	18.8	26.60	2.30
70ESN4000UA12MT	1250.0	4000.0	922.0	2950	28.3	12.80	24.20	2.3

Note: 70 Series Tools require a 220/230 power supply to the controller

NeoTek - 30 Series - Corded Electric - Transducer Control - Retractable Spindle (2.6-30 Nm)

- For fixtured applications to ensure bolt engagement
- Configurable LED light rings
- Programmable multi-function buttons
- Brushless Motor
- Transducer Control



Model	Torque Range				Weight		Length	Side to Center
	Min Nm	Max Nm	Min Ft Lb	Max Ft Lb	Lb	kg	in	in
30EAR12S131	2.6	12.1	1.9	8.9	3.61	1.64	16.2	0.54
30EAR25S131	5.4	25.0	4.0	18.4	4.01	1.82	16.2	0.54
30EAR30S131	7.0	30.0	5.2	22.1	4.01	1.82	16.2	0.54

NeoTek - 50 Series - Corded Electric - Transducer Control - Retractable Spindle (8-235 Nm)

<STEPREF A="ATT17711" O="SG_738750" OT="Product" VC="EN-US All USA" VO="735745" W="Main" />

- For fixtured applications to ensure bolt engagement
- Configurable LED light rings
- Programmable multi-function buttons
- Brushless Motor
- Transducer Control



Model	Torque Range				Weight		Length	Side to Center
	Min Nm	Max Nm	Min Ft Lb	Max Ft Lb	Lb	kg	in	in
50EAR39S231	8.0	39.0	5.9	28.8	5.00	2.20	19.0	0.69
50EAR55S231	12.0	55.0	8.9	40.6	5.38	2.37	19.0	0.69
50EAR56S341	11.0	56.0	8.1	41.3	5.60	2.51	20.2	0.67
50EAR85S341	17.0	84.0	12.5	62.0	5.98	2.68	20.2	0.87
50EAR100S341	20.0	100.0	14.8	73.8	6.48	2.91	20.2	0.87
50EAR165S461	33.0	165.0	24.3	121.7	7.68	6.81	21.7	1.06
50EAR235S461	49.0	235.0	36.1	173.3	8.67	8.46	22.3	1.06

NeoTek - 30 Series - Corded Electric - Transducer Control Flush Socket (2.6-30 Nm)

- For low clearance applications
- Configurable LED light rings
- Programmable multi-function buttons
- Brushless Motor
- Transducer Control



Model	Torque Range				Weight		Length	Side to Center
	Min Nm	Max Nm	Min Ft Lb	Max Ft Lb	Lb	kg	in	in
30EFN12F1	2.6	12.1	1.9	8.9	3.61	1.64	16.2	0.54
30EFN25F1	5.4	25.0	4.0	18.4	4.01	1.82	16.2	0.54
30EFN30F1	8.0	30.0	5.9	22.1	4.01	1.82	16.2	0.54

NeoTek - 50 Series - Corded Electric - Transducer Control Flush Socket (8-235 Nm)

- For low clearance applications
- Configurable LED light rings
- Programmable multi-function buttons
- Brushless Motor
- Transducer Control



Model	Torque Range				Weight		Length	Side to Center
	Min Nm	Max Nm	Min Ft Lb	Max Ft Lb	Lb	kg	in	in
50EFN39F2	8.0	39.0	5.9	28.8	6.00	2.70	19.0	0.69
50EFN55F2	12.0	55.0	8.9	40.6	6.38	2.87	19.0	0.69
50EFN56F3	11.0	56.0	8.1	41.3	5.60	2.51	20.2	0.88
50EFN85F3	17.0	84.0	12.5	62.0	5.98	2.68	20.2	0.88
50EFN100F3	20.0	100.0	14.8	73.8	6.48	2.91	20.2	0.88
50EFN165F4	33.0	165.0	24.3	121.7	7.68	3.49	21.7	1.06
50EFN235F4	49.0	235.0	36.1	173.3	9.87	4.48	22.3	1.06

NeoTek - 50 Series - Corded Electric - Transducer Control Tubenut (7.6-40 Nm)

- For fluid line applications
- Configurable LED light rings
- Programmable multi-function buttons
- Brushless Motor
- Transducer Control

Model	Torque Range				Weight		Length
	Min Nm	Max Nm	Min Ft Lb	Max Ft Lb	Lb	kg	in
50ETN20T2	7.6	20.0	5.6	14.8	4.13	1.90	18.4
50ETN30T3	11.0	30.0	8.1	22.1	4.23	1.90	18.0
50ETN40T4	14.0	40.0	10.3	29.5	5.03	2.20	19.0



NeoTek - 50 Series - Corded Electric - Transducer Control Hold-n-Drive (11-235 Nm)

- For specialized frame and suspension applications
- Configurable LED light rings
- Programmable multi-function buttons
- Brushless Motor
- Transducer Control

Model	Torque Range				Weight		Length	Side to Center
	Min Nm	Max Nm	Min Ft Lb	Max Ft Lb	Lb	kg	in	in
50EHN56H	11.0	56.0	8.1	41.3	7.50	3.37	20.3	1.06
50EHN85H	17.0	84.0	12.5	62.0	7.88	3.54	20.3	1.06
50EHN100H	20.0	100.0	14.8	73.8	7.08	3.20	20.3	1.06
50EHN165H	33.0	165.0	24.3	121.7	6.48	2.95	21.7	1.06
50EHN235H	49.0	235.0	36.1	173.3	8.67	3.94	22.3	1.06



NeoTek - 50 Series - Corded Electric - Transducer Control Crowfoot (8-30 Nm)

- For hard to reach areas with limited access
- Configurable LED light rings
- Programmable multi-function buttons
- Brushless Motor
- Transducer Control

Model	Torque Range				Weight		Length	Side to Center
	Min Nm	Max Nm	Min Ft Lb	Max Ft Lb	Lb	kg	in	in
50ECN30C1	8.0	30.0	5.9	22.1	4.73	1.90	20.7	0.63
50ECN30C3	8.0	30.0	5.9	22.1	4.73	1.90	20.4	0.63



NeoTek Tool Cable

- Use to connect a 30/50/70 Series tool to an mPro400GCD-P controller.
- Designed for maximum life.
- Quarter-Turn connection.
- Ultra-tight 30mm bend radius.
- Cycle counter memory.



Model	Description	Weight		Length	
		Lb	kg	ft	m
961560-030	3 Meter NeoTek Tool Cable	1.7	0.79	9.8	3
961560-060	6 Meter NeoTek Tool Cable	2.7	1.23	19.7	6
961560-080	8 Meter NeoTek Tool Cable	3.4	1.52	26.2	8
961560-100	10 Meter NeoTek Tool Cable	3.9	1.81	32.8	10

NeoTek Tool Extension Cables

- Used in applications requiring cable lengths greater than 10 meters.

Model	Description	Weight		Length	
		Lb	kg	ft	m
961923-050	5 Meter NeoTek Extension Cable	3.9	1.79	16.5	5
961923-100	10 Meter NeoTek Extension Cable	7.4	3.34	32.9	10
961923-150	15 Meter NeoTek Extension Cable	10.8	4.89	49.2	15
961923-200	20 Meter NeoTek Extension Cable	14.2	6.44	65.6	20
961923-250	25 Meter NeoTek Extension Cable	17.6	7.99	82	25



Tool Cable Adaptor

- Used to connect 67 series tools as well as older 17/47 Series corded tools to an mPro400GCD controller
- Allows easy upgrade to newest controller technology

Model	Description
961789PT	Y-Cable Adapter for 17/47/67 Series tools



NeoTek Locking Ring

Model
943527PT

NeoTek Camera Scanner

- Scans 1D and 2D barcodes
- Scan images from paper documents as well as screens and monitors
- Camera technology eliminates traditional laser barcode scanners

Model	Description
937731PT	For 30/50 Series Right Angle and Inline Tools
942391PT	For 70 Series Right Angle and Inline Tools
T55-3000018	For 30 Series Pistol Tools
T55-3000019	For 50 Series Pistol Tools



NeoTek Tool Light

- Ultra-bright LEDs
- Fully programmable
- High, medium, and low intensity light beam

Model	Description
943455PT	For 30/50 Series Right Angle and Inline Tools
943462PT	For 30/50 Series Right Angle and Inline Tools
943464PT	For 70 Series Right Angle and Inline Tools



NeoTek Gyroscope

The Gyroscope module allows angle correction for hand-held tightening equipment without support.

- Up to now, angle controlled tightening strategies have required a reaction arm to avoid a change of the reference angle during a rundown.
- This support is no longer required due to the corrective function of the gyroscope module. the potential influence of an operator to the absolute angle is compensated by the module.

Model	Description
942396PT	For 30/50 Series Right Angle and Inline Tools 30Nm
943684PT	For 50 Series Right Angle and Inline Tools
943685PT	For 70 Series Right Angle and Inline Tools
T55-3000020	For 30 Series Pistol
T55-3000021	For 50 Series Pistol



NeoTek Reaction bar

- Improved operator safety
- Keeps hands away from assembly
- One hand operation

Model	Description
201034	For 70ESN95ND6/70ESN130ND6/70ESN185ND6/70ESN245ND6
301934PT	For 30ESN12EAQ/30ESN12FA3/30EPN12EAQ/30EPN12FA3
46036202	For 70ESN355SD8/70ESN475SD8/70ESN700SD8/700ESN850SD8
48047128	For 50ESN65HD4/50ESN85JD4/50ESN125KD4/50EPN65HD4/50EPN85JD4/50EPN125KD4
542127	For 30ESN19FB3/30ESN26FC3/50ESN28FD3/50ESN43GD3/30EPN19FB3/30EPN26FC3/50EPN28FD3/50EPN43GD3
T50-3000064	For 50EAN59HA3
T50-3000065	For 50EAN80JA4
T50-3000066	For 50EAN110KA4
T50-3000067	For 50EAN150KB4
T50-3000068	For 50EAN205NA6

NeoTek Suspension Bail

- For use with spring balancer
- Improved operator ergonomics

Model	Description
T50-3000048	30/50 Series Fixed Suspension Bail (excl. pistols)
T50-3000060	30/50 Series Fixed Offset Suspension Bail (excl. pistols)
T50-3000061	30/50 Series Swivel Offset Suspension Bail (excl. pistols)
T50-3000063	30/50 Series Swivel Suspension Bail (excl. pistols)



NeoTek Body Extension

- For hard to reach applications.
- Reduces reaction force to the operator.

Model	Description
T50-3000069	For 50EAN110KA4
T50-3000070	For 50EAN150KB4/50EAN205NA6
T50-3000071	For 50EAN80JA4
T50-3000072	For 50EAN59HA3

Suspension Bail

- For use with spring balancer
- Improved operator ergonomics

Model	Description
1110909	18/48 Series suspension bail (excl. pistols)
942045PT	Standard tool suspension bail for LiveWire 2 L Series
942185PT	Rotating suspension bail for LiveWire 2 L Series
S387983	Rotating suspension bail for right angle nutrunner (not for LiveWire 2 L Series)



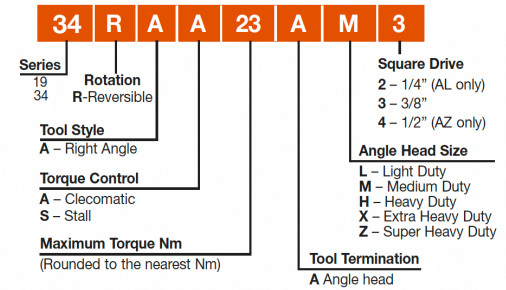
19 Series - Angle Nutrunner - Clutch Shut-Off Lever Start - Collar Reverse

0.3 - 8.3 ftlbs / 0.5 - 11.3Nm



- Durable Clecomatic Clutch delivers best-in-class torque repeatability and long calibration cycle
- Lightweight, ergonomic and durable handle designed with operator in mind
- Engineered to suit a wide range of applications, from high volume assembly to aerospace
- Grip material tested to withstand a range of industrial chemicals

Model Number Example



Model	Torque Range				Free Speed r/min	Length in	Weight		Head Height in	Side to Center in	Air Consumption Scfm	Air Inlet Size in
	Min Nm	Max Nm	Min Ft Lb	Max Ft Lb			Lb	kg				
19RAA02AM2	0.5	2.1	0.3	1.5	2400	11.9	1.7	0.77	1.06	0.360	11	1/8
19RAA02AH2	0.5	2.4	0.3	1.7	2100	12.5	1.81	0.82	1.19	0.50	11	1/8
19RAA02AH3	0.5	2.4	0.3	1.7	2100	12.5	1.81	0.82	1.19	0.50	11	1/8
19RAA03AM2	0.6	3.1	0.4	2.2	1650	12.2	1.81	0.82	1.06	0.360	11	1/8
19RAA03AH2	0.7	3.4	0.5	2.5	1450	12.7	1.81	0.82	1.19	0.50	11	1/8
19RAA03AH3	0.7	3.4	0.5	2.5	1450	12.7	1.81	0.82	1.19	0.50	11	1/8
19RAA04AM2	1.4	4.7	1	3.4	950	12	1.7	0.77	1.06	0.360	11	1/8
19RAA05AM2	1.4	5.7	1	4.2	570	12.4	1.81	0.82	1.06	0.360	11	1/8
19RAA06AH2	1.5	6	1.1	4.4	850	12.5	1.81	0.82	1.19	0.50	11	1/8
19RAA06AH3	1.5	6	1.1	4.4	850	12.5	1.81	0.82	1.19	0.50	11	1/8
19RAA07AH2	1.5	6.8	1.1	5	500	12.9	1.9	0.86	1.19	0.50	11	1/8
19RAA07AH3	1.5	6.8	1.1	5	500	12.9	1.9	0.86	1.19	0.50	11	1/8
19RAA09AH2	2.0	8.5	1.4	6.2	500	12.9	1.9	0.86	1.19	0.50	11	1/8
19RAA09AH3	2.0	8.5	1.4	6.2	500	12.9	1.9	0.86	1.19	0.50	11	1/8
19RAA11AH2	2.5	11.3	1.8	8.3	340	12.3	2.09	0.95	1.19	0.50	11	1/8
19RAA11AH3	2.5	11.3	1.8	8.3	340	12.3	2.09	0.95	1.19	0.50	11	1/8
19RAA12AH2	2.5	11.3	1.8	8.3	200	12.9	1.9	0.86	1.19	0.50	11	1/8
19RAA12AH3	2.5	11.3	1.8	8.3	200	12.9	1.9	0.86	1.19	0.50	11	1/8

Tool performance rated at 90 psi (620kPa) air pressure.
Standard Equipment:
Manual and all torque springs required to meet indicated torque specification

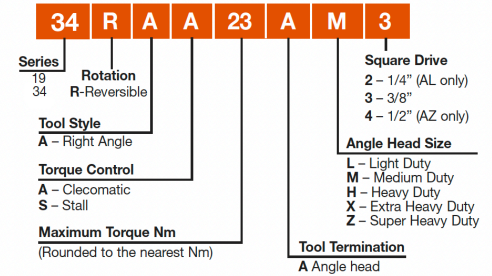
34 Series - Angle Nutrunner - Clutch Shut-Off Lever Start - Collar Reverse

4 - 55 ftlbs / 8 - 75 Nm

- Lightweight, ergonomic, and easy to service
- Indexable angle head for added versatility
- Durable Clecomatic Clutch delivers best-in-class torque repeatability and long calibration cycle
- Heavy-duty Cleco motor is the industry standard for reliability
- Oil-less blades reduce oil mist in work area



Model Number Example



Nutrunners & Screwdrivers

Model	Torque Range				Free Speed r/min	Length in	Weight		Head Height in	Side to Center in	Air Consumption Scfm	Air Inlet Size in
	Min Nm	Max Nm	Min Ft Lb	Max Ft Lb			Lb	kg				
34RAA08AL3	5.4	8.1	4.0	6.0	2060	14.5	2.69	1.22	1.08	0.47	0.96	3/8
34RAA11AL3	6.8	10.8	5.0	8.0	1675	14.5	2.69	1.22	1.08	0.47	0.96	3/8
34RAA15AM3	9.5	14.9	7.0	11.0	1185	14.6	2.9	1.3	1.16	0.52	0.96	3/8
34RAA26AH3	13.6	25.8	10.0	19.0	710	15.4	3.2	1.45	1.22	0.57	0.96	3/8
34RAA28AH3	13.6	27.1	10.0	20.0	580	15.4	3.31	1.50	1.16	0.52	0.96	3/8
34RAA33AX3	16.3	32.5	12.0	24.0	545	15.5	3.51	1.59	1.36	0.67	0.96	3/8
34RAA37AX3	19	36.6	14.0	27.0	480	15.6	3.4	1.54	1.36	0.67	0.96	3/8
34RAA47AX3	23.0	47.0	17.0	35.0	385	15.6	3.4	1.54	1.36	0.67	0.96	3/8
34RAA68AZ3	34.0	68.0	25.0	50	255	16.2	3.7	1.68	1.60	0.7	0.96	3/8
34RAA68AZ4	34.0	68.0	25.0	50	255	16.2	3.7	1.77	1.60	0.7	0.96	3/8
34RAA75AZ3	38.0	75.0	28.0	55	155	17	3.9	1.77	1.60	0.7	0.96	3/8
34RAA75AZ4	38.0	75.0	28.0	55	155	17	3.9	1.77	1.60	0.7	0.96	3/8

General: Tool performance rated at 90 psi (620kPa) air pressure.

Standard Equipment:

Operating instructions & service manual

Suspension bail

Clutch adjustment tool

Optional Equipment:

Service wrench: 201898

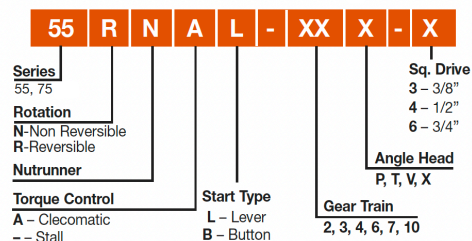
55/75 Series - Angle Nutrunner - Clutch Shut-Off Lever Start - Collar Reverse



26 - 305 ftls / 35 - 410 Nm

- Heavy-duty Cleco motor is the industry standard for reliability
- Durable Clecomatic Clutch delivers best-in-class torque repeatability and long calibration cycle
- Planetary gears designed for tool speed changes with minimal parts service and replacement
- Heavy-duty spindle bearings and splined retractable spindles reduces friction, improves torque repeatability, and prolongs life.
- External Torque Adjustment
- Rotating Exhaust Deflector

55 & 75 Model Number Example



Model	Torque Range				Free Speed r/min	Length in	Weight		Head Height in	Side to Center in	Air Consumption Scfm	Air Inlet Size in
	Min Nm	Max Nm	Min Ft Lb	Max Ft Lb			Lb	kg				
55RNAL-4P-4	35.0	73.0	26.0	54.0	330	19.1	7.4	3.35	1.63	0.72	55	1/2
55RNAL-4T-4	39.0	87.0	29.0	64.0	280	19.3	7.8	3.52	1.97	0.88	55	1/2
55RNAL-3P-4	49.0	108.0	36.0	80.0	220	19.1	7.4	3.35	1.63	0.72	55	1/2
55RNAL-3T-4	58.0	129.0	43.0	95.0	190	19.3	7.8	3.52	1.97	0.88	55	1/2
55RNAL-2T-4	68.0	170.0	50.0	125.0	140	19.3	7.8	3.52	1.97	0.88	55	1/2
75RNAL-3V-4	95.0	190.0	70.0	140.0	175	21.9	13.2	6.01	2.50	1.09	70	1/2
75RNAL-2V-4	122.0	255.0	90.0	190.0	130	21.9	13.2	6.01	2.50	1.09	70	1/2
75RNAL-3X-6	150.0	305.0	110.0	225.0	110	22.6	15	6.80	2.75	1.44	70	1/2
75RNAL-2X-6	203.0	410.0	150.0	305.0	80	22.6	15	6.80	2.75	1.44	70	1/2

General:
 Tool performance data measured at 6.2 bar inlet air pressure at the air inlet tube.
 Standard Equipment:
 Operation and maintenance instructions
 Torque reaction mounting plate (75 series)
 All torque springs necessary to achieve the stated torque.

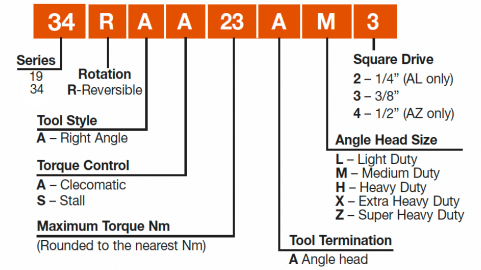
19 Series - Angle Nutrunner - Stall - Lever Start - Collar Reverse

Up to 4.6 ftlbs / 6.2 Nm

- Designed for soft-draw applications
- Torque can be adjusted by adjusting air pressure
- Compact angle head for tight access
- Lightweight, ergonomic, and easy to service



Model Number Example



Model	Torque Range Max (nm)	Torque Range Max (ft/lb)	Free Speed	Length	Weight		Head Height	Side to Center	Air Consumption	Air Inlet Size
	Max Nm	Max Ft Lb	r/min	in	Lb	kg	in	in	Scfm	in
19RAS03AM2	3.2	2.3	1700	11.4	1.3	0.59	1.06	0.36	11	1/8
19RAS05AM2	5.2	3.8	850	10.6	1.19	0.54	1.06	0.36	11	1/8
19RAS06AH3	6.2	4.6	880	11	1.3	0.59	1.19	0.5	11	1/8

General: Tool performance rated at 90 psi (620kPa) air pressure.
 Standard Equipment:
 Operating instructions & service manual
 Suspension bail

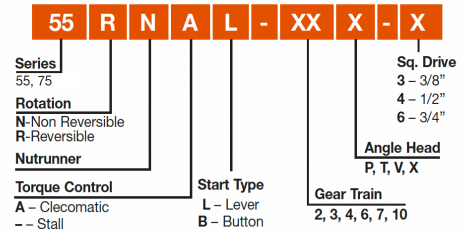
55/75 Series - Angle Nutrunner - Stall - Lever Start - Collar Reverse

Up to 325 ftlbs / 440 Nm

- Engineered for performance, durability, mounting versatility, and serviceability
- Torque can be adjusted by adjusting air pressure
- Heavy duty motor, gearing and angle head for long life
- Tool can be reversed if required
- Torque reaction plate supplied with 75 series



55 & 75 Model Number Example



Model	Torque Range Max (nm)	Torque Range Max (ft/lb)	Free Speed	Length	Weight		Head Height	Side to Center	Air Consumption	Air Inlet Size
	Max Nm	Max Ft Lb	r/min	in	Lb	kg	in	in	Scfm	in
55RNL-7T-4	55.6	41.0	490	16.1	6.1	2.78	1.63	0.72	55	1/2
55RNL-4T-4	92.0	68.0	290	16.7	6.5	2.95	1.63	0.72	55	1/2
55RNL-3T-4	135.0	100	195	16.7	6.5	2.95	1.63	0.72	55	1/2
75RNL-4V-4	142.0	105.0	280	19.4	11.4	5.16	11.4	1.09	70	1/2
55RNL-2T-4	176.0	130	145	16.7	6.5	2.95	1.63	0.72	55	1/2
75RNL-3V-4	210.0	155.0	190	19.4	11.4	5.16	11.4	1.09	70	1/2
75RNL-2V-4	278.0	205.0	140	19.4	11.4	5.16	2.50	1.09	70	1/2
75RNL-3X-6	330.0	245.0	120	20.1	13.1	5.95	2.75	1.44	70	1/2
75RNL-2X-6	440.0	325.0	90	20.1	13.1	5.95	2.75	1.44	70	1/2

GENERAL:
Tool performance data measured at 6.2 bar inlet air pressure at the air inlet tube.
STANDARD EQUIPMENT:
Operation and maintenance instructions
Torque reaction mounting plate (75 series)

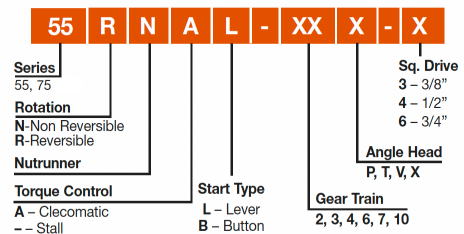
55 Series - Angle Nutrunner - Stall - Lever Start - Non-reversible

Up to 140 ftlbs / 190 Nm

- Engineered for performance, durability, mounting versatility, and serviceability
- Torque can be adjusted by adjusting air pressure
- Heavy duty motor, gearing and angle head for long life
- Non reversible prevents accidental operation of tool in reverse



55 & 75 Model Number Example



Model	Torque Range Max (nm)	Torque Range Max (ft/lb)	Free Speed	Length	Weight		Head Height	Side to Center	Air Consumption	Air Inlet Size
	Max Nm	Max Ft Lb	r/min	in	Lb	kg	in	in	Scfm	in
55NL-3T-4	149.0	110.0	290	16.7	6.4	2.89	1.97	0.88	55	1/2
55NL-2T-4	190.0	140	210	16.7	6.4	2.89	1.97	0.88	55	1/2

General:
Tool performance data measured at 6.2 bar inlet air pressure at the air inlet tube.
STANDARD EQUIPMENT:
Operation and maintenance instructions

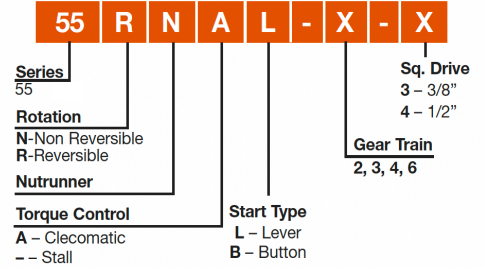
55 Series - Inline Reaction Bar Nutrunner - Lever Start - Collar Reverse

25 - 67 ftls / 34 - 91Nm - Use with Torque Reaction

- Engineered for performance, durability, mounting versatility, and serviceability
- Durable Clecomatic shut off clutch delivers best in class torque repeatability
- Heavy duty motor, gearing and clutch for long life
- Torque reaction bar supplied with tool



55 Model Number Example



Model	Torque Range				Free Speed r/min	Length in	Weight		Air Consumption Scfm	Air Inlet Size in
	Min Nm	Max Nm	Min Ft Lb	Max Ft Lb			Lb	kg		
55RNAL-3-4	34.0	69.0	25.0	51.0	370	16.1	6.5	2.95	55	1/2
55RNAL-2-4	46.0	91.0	30.0	67.0	270	16.1	6.5	2.95	55	1/2

General: Tool performance rated at 90 psi (620kPa) air pressure
 Standard Equipment:
 Operating instructions & service manual
 Aluminum Torque Reaction Bar 869769

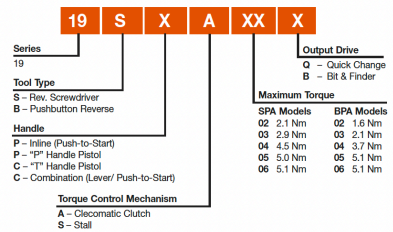
19 Series - Inline - Push-to-Start - Push Button Reverse

0.3 - 3.7ftlbs / 0.6 - 5.1Nm

- Durable Clecomatic Clutch delivers best-in-class torque repeatability and long calibration cycle
- Lightweight, ergonomic and durable handle designed with operator in mind
- Engineered to suit a wide range of applications, from high volume assembly to aerospace
- Grip material tested to withstand a range of industrial chemicals



Cleco 19 Series Inline



Model	Torque Range				Free Speed r/min	Length in	Weight		Air Consumption Scfm	Air Inlet Size in
	Min Nm	Max Nm	Min Ft Lb	Max Ft Lb			Lb	kg		
19BPA02Q	0.6	2.1	0.3	1.6	2300	9.3	1.41	0.64	11	1/8
19BPA03Q	0.6	2.9	0.3	2.2	1600	9.3	1.41	0.64	11	1/8
19BPA04Q	1.1	4.5	0.3	3.3	920	9.1	1.3	0.59	11	1/8
19BPA05Q	1.1	5.1	0.3	3.7	560	9.5	1.5	0.68	11	1/8
19BPA06Q	1.1	5.1	0.3	3.7	220	9.5	1.5	0.68	11	1/8

General: 90 psi (620kPa) required for maximum rated torque.
 Standard Equipment:
 Operating instructions & service manual
 Suspension bail
 All torque springs required to meet indicated torque.

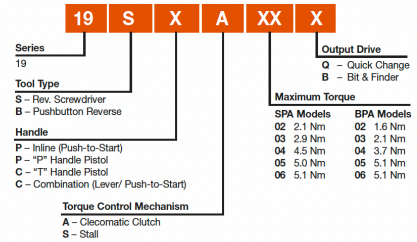
19 Series - Inline - Push-to-Start - Collar Reverse

0.3 - 3.7ftlbs / 0.6 - 5.1Nm

- Durable Clecomatic Clutch delivers best-in-class torque repeatability and long calibration cycle
- Lightweight, ergonomic and durable handle designed with operator in mind
- Engineered to suit a wide range of applications, from high volume assembly to aerospace
- Grip material tested to withstand a range of industrial chemicals



Cleco 19 Series Inline



Model	Torque Range				Free Speed r/min	Length in	Weight		Air Consumption Scfm	Air Inlet Size in
	Min Nm	Max Nm	Min Ft Lb	Max Ft Lb			Lb	kg		
19SPA02Q	0.6	2.1	0.3	1.6	2800	9.1	1.41	0.64	11	1/8
19SPA03Q	0.6	2.9	0.3	2.2	1900	9.3	1.41	0.64	11	1/8
19SPA04Q	1.1	4.5	0.3	3.3	1100	9.1	1.3	0.59	11	1/8
19SPA05Q	1.1	5.1	0.3	3.7	660	9.5	1.5	0.68	11	1/8
19SPA06Q	1.1	5.1	0.3	3.7	260	9.5	1.5	0.68	11	1/8

General: 90 psi (620kPa) required for maximum rated torque.
 Standard Equipment:
 Operating instructions & service manual
 Suspension bail
 All torque springs required to meet indicated torque.

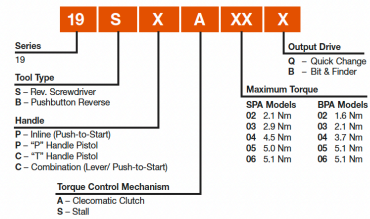
19 Series - Inline - Push and Lever Start - Collar Reverse

0.3 - 3.7ftlbs / 0.6 - 5.1Nm

- Durable Clecomatic Clutch delivers best-in-class torque repeatability and long calibration cycle
- Lightweight, ergonomic and durable handle designed with operator in mind
- Engineered to suit a wide range of applications, from high volume assembly to aerospace
- Grip material tested to withstand a range of industrial chemicals



Cleco 19 Series Inline



Model	Torque Range				Free Speed r/min	Length in	Weight		Air Consumption Scfm	Air Inlet Size in
	Min Nm	Max Nm	Min Ft Lb	Max Ft Lb			Lb	kg		
19SCA02Q	0.6	2.1	0.3	1.6	2800	9.8	1.5	0.68	11	1/8
19SCA03Q	0.6	2.9	0.3	2.2	1900	10	1.5	0.68	11	1/8
19SCA04Q	1.1	4.5	0.33	3.3	1100	9.8	1.5	0.68	11	1/8
19SCA05Q	1.1	5.1	0.3	3.7	660	10.2	1.61	0.73	11	1/8
19SCA06Q	1.1	5.1	0.3	3.7	260	10.2	1.61	0.73	11	1/8

General: 90 psi (620kPa) required for maximum rated torque.
 Standard Equipment:
 Operating instructions & service manual
 Suspension bail
 All torque springs required to meet indicated torque.
 Lever Push-to-Start models include kit to convert to lever only. (301409)

8 Series - Inline - Push-to-Start - Push Button Reverse

0.5 - 6.2 ftlbs / 0.8 - 8.5 Nm



- Compact design increases productivity, saves weight, and is easy to integrate into any assembly environment
- Dependable Clecomatic clutch delivers consistent torque accuracy and repeatability
- Cleco motor is the industry standard for durability
- Easy to repair and maintain, with high parts interchangeability to other Cleco products

Model	Torque Range				Free Speed r/min	Length in	Weight		Side to Center in	Air Consumption Scfm	Air Inlet Size in
	Min Nm	Max Nm	Min Ft Lb	Max Ft Lb			Lb	kg			
8RSA-40BQ	0.8	2.8	0.5	2	3200	8.9	2.12	0.96	0.77	19.1	1/4
8RSA-30BQ	0.8	3.4	0.5	2.5	2500	8.9	2.12	0.96	0.77	19.1	1/4
8RSA-20BQ	0.8	4.5	0.5	3.3	1800	8.9	2.12	0.96	0.77	19.1	1/4
8RSA-10BQ	0.8	7.3	0.5	5.3	800	9.6	2.38	1.08	0.77	19.1	1/4
8RSA-5BQ	0.8	8.5	0.5	6.2	400	9.6	2.38	1.08	0.77	19.1	1/4
8RSA-7BQ	0.8	8.5	0.5	6.2	550	9.6	2.38	1.08	0.77	19.1	1/4

General: 90 psi (620kPa) required for maximum rated torque.
 Standard Equipment:
 Operating instructions & service manual
 Suspension bail.
 All torque springs required to meet indicated torque.

88 Series - Inline - Push and Lever Start - Push Button Reverse

1.2 - 13.2 ftlbs / 1.7 - 18Nm

- Compact design increases productivity, saves weight, and is easy to integrate into any assembly environment
- Dependable Clecomatic clutch delivers consistent torque accuracy and repeatability
- Cleco motor is the industry standard for durability
- Easy to repair and maintain, with high parts interchangeability to other Cleco products
- 5C-3 3/8" Square or 5CQ 1/4" Quick Release Output



Model	Torque Range				Free Speed r/min	Length in	Weight		Air Consumption Scfm	Air Inlet Size in
	Min Nm	Max Nm	Min Ft Lb	Max Ft Lb			Lb	kg		
88RSAL-5C-3	1.7	18	1.2	13.2	400	11.1	3.11	1.41	19.1	1/4
88RSAL-5CQ	1.7	18	1.2	13.2	400	11.1	3.11	1.41	19.1	1/4

General: 90 psi (620kPa) required for maximum rated torque.

Weight does not include side handle.

Standard Equipment:

Operating instructions & service manual

Suspension bail

Side handle 861006.

All torque springs required to meet indicated torque

88 Series - Inline - Push-to-Start - Push Button Reverse

1.2 - 13.2 ftlbs / 1.7 - 18Nm

- Compact design increases productivity, saves weight, and is easy to integrate into any assembly environment
- Dependable Clecomatic clutch delivers consistent torque accuracy and repeatability
- Cleco motor is the industry standard for durability
- Easy to repair and maintain, with high parts interchangeability to other Cleco products
- C-3 3/8" Square or CQ 1/4" Quick Release Output



Model	Torque Range				Free Speed r/min	Length in	Weight		Side to Center in	Air Consumption Scfm	Air Inlet Size in
	Min Nm	Max Nm	Min Ft Lb	Max Ft Lb			Lb	kg			
88RSA-7C-3	1.7	10	1.2	7.3	550	9.5	2.62	1.19	0.77	19.1	1/4
88RSA-7CQ	1.7	10	1.2	7.3	550	9.5	2.62	1.19	0.77	19.1	1/4
88RSA-5C-3	1.7	18	1.2	13.2	400	9.5	2.62	1.19	0.77	19.1	1/4
88RSA-5CQ	1.7	18	1.2	13.2	400	9.5	2.62	1.19	0.77	19.1	1/4

General: 90 psi (620kPa) required for maximum rated torque.
 Weight does not include side handle.
 Standard Equipment:
 Operating instructions & service manual
 Suspension bail
 Side handle 861006 on models above 8 ft lbs torque cap.
 All torque springs required to meet indicated torque.

19 Series - Pistol Grip - "T" Handle - Push and Trigger Start

0.4 - 6.5 ftlbs / 0.6 - 8.9 Nm

- Durable Clecomatic Clutch delivers best-in-class torque repeatability and long calibration cycle
- 2 grip sizes available for added versatility
- Reverse lever can be rotated to accommodate left-or-right-handed operators
- Engineered to suit a wide range of applications, from high volume assembly to aerospace
- T Handle balanced for high volume assembly cell and line production of machine screws



Model	Torque Range				Free Speed r/min	Length in	Weight		Air Consumption Scfm	Air Inlet Size in
	Min Nm	Max Nm	Min Ft Lb	Max Ft Lb			Lb	kg		
19TCA02Q	0.6	2.1	0.4	1.5	2800	8	1.43	0.65	11	1/4
19TCA03Q	0.6	2.9	0.4	2.1	1900	8.2	1.54	0.70	11	1/4
19TCA04Q	1.1	4.5	0.8	3.3	1100	8	1.54	0.70	11	1/4
19TCA05Q	1.1	5.1	0.8	3.7	660	8.4	1.54	0.70	11	1/4
19TCA06Q	1.1	5.1	0.8	3.7	260	8.4	1.54	0.70	11	1/4
19TCA07Q	1.7	6.8	1.2	5	660	8.4	1.54	0.70	11	1/4
19TCA09Q	1.7	8.9	1.2	6.5	470	9.3	1.72	0.78	11	1/4

General: 90 psi (620kPa) required for maximum rated torque.
 Standard Equipment:
 Operating instructions & service manual
 Suspension bail
 All torque springs required to meet indicated torque.

19 Series - Pistol Grip - "T" Handle - Trigger Start

Up to 0.4 - 10.8 ftlbs / 0.6 - 14.7 Nm

- Durable Clecomatic Clutch delivers best-in-class torque repeatability and long calibration cycle
- 2 grip sizes available for added versatility
- Reverse lever can be rotated to accommodate left-or-right-handed operators
- Engineered to suit a wide range of applications, from high volume assembly to aerospace



Model	Torque Range				Free Speed r/min	Length in	Weight		Air Consumption Scfm	Air Inlet Size in
	Min Nm	Max Nm	Min Ft Lb	Max Ft Lb			Lb	kg		
19TTA02Q	0.6	2.1	0.4	1.5	2800	7.9	1.43	0.65	11	1/4
19TTA03Q	0.6	2.9	0.4	2.1	1900	8.1	1.54	0.70	11	1/4
19TTA04Q	1.1	4.5	0.8	3.3	1100	7.9	1.54	0.70	11	1/4
19TTA05Q	1.1	5.1	0.8	3.7	660	8.3	1.54	0.70	11	1/4
19TTA06Q	1.1	5.1	0.8	3.7	260	8.3	1.54	0.70	11	1/4
19TTA07Q	1.7	6.8	1.2	5	660	8.3	1.54	0.70	11	1/4
19TTA09Q	1.7	8.9	1.2	6.5	470	9.3	1.72	0.78	11	1/4
19TTA15Q	5.1	14.7	3.7	10.8	260	9.6	1.94	0.88	11	1/4

General: 90 psi (620kPa) required for maximum rated torque.
 Standard Equipment:
 Operating instructions & service manual
 Suspension bail
 All torque springs required to meet indicated torque.

19 Series - Pistol Grip - "P" Handle - Push and Trigger Start

0.4 - 6.5 ftlbs / 0.6 - 8.9 Nm



- Durable Clecomatic Clutch delivers best-in-class torque repeatability and long calibration cycle
- 2 grip sizes available for added versatility
- Reverse lever can be rotated to accommodate left-or-right-handed operators
- Engineered to suit a wide range of applications, from high volume assembly to aerospace
- P Handle shaped so force can be applied for prevailing torque

Model	Torque Range				Free Speed r/min	Length in	Weight		Air Consumption Scfm	Air Inlet Size in
	Min Nm	Max Nm	Min Ft Lb	Max Ft Lb			Lb	kg		
19PCA02Q	0.6	2.1	0.4	1.5	2800	8.1	1.43	0.65	11	1/4
19PCA03Q	0.6	2.9	0.4	2.1	1900	8.3	1.5	0.68	11	1/4
19PCA04Q	1.1	4.5	0.8	3.3	1100	8.1	1.41	0.64	11	1/4
19PCA05Q	1.1	5.1	0.8	3.7	660	8.5	1.5	0.68	11	1/4
19PCA06Q	1.1	5.1	0.8	3.7	260	8.5	1.5	0.68	11	1/4
19PCA07Q	1.7	6.8	1.2	5	660	8.5	1.5	0.68	11	1/4
19PCA09Q	1.7	8.9	1.2	6.5	470	9.8	1.65	0.75	11	1/4

General: Tool performance rated at 90 psi (620kPa) air pressure.
 Standard Equipment:
 Operating instructions & service manual
 Suspension ball
 All torque springs required to meet indicated torque specification

19 Series - Pistol Grip - “P” Handle - Trigger Start

0.4 - 10.8 ftlbs / 0.6 - 14.7 Nm



- Durable Clecomatic Clutch delivers best-in-class torque repeatability and long calibration cycle
- 2 grip sizes available for added versatility
- P Handle shaped so force can be applied for prevailing torque fasteners
- Reverse lever can be rotated to accommodate left-or-right-handed operators
- Engineered to suit a wide range of applications, from high volume assembly to aerospace

Model	Torque Range				Free Speed r/min	Length in	Weight		Air Consumption Scfm	Air Inlet Size in
	Min Nm	Max Nm	Min Ft Lb	Max Ft Lb			Lb	kg		
19PTA02Q	0.6	2.1	0.4	1.5	2800	8	1.41	0.64	11	1/4
19PTA03Q	0.6	2.9	0.4	2.1	1900	8.2	1.5	0.68	11	1/4
19PTA04Q	1.1	4.5	0.8	3.3	1100	8	1.41	0.64	11	1/4
19PTA05Q	1.1	5.1	0.8	3.7	660	8.4	1.5	0.68	11	1/4
19PTA06Q	1.1	5.1	0.8	3.7	260	8.4	1.5	0.68	11	1/4
19PTA07Q	1.7	6.8	1.2	5	660	8.4	1.5	0.68	11	1/4
19PTA09Q	1.7	8.9	1.2	6.5	470	9.8	1.65	0.75	11	1/4
19PTA15Q	5.1	14.7	3.7	10.8	260	9.7	1.92	0.87	11	1/4

General: Tool performance rated at 90 psi (620kPa) air pressure.
 Standard Equipment:
 Operating instructions & service manual
 Suspension bail
 Side handle on 19PTA15Q.
 All torque springs required to meet indicated torque specification

19 Series - Pistol Grip - Stall - "T" Handle - Trigger Start

Up to 3.7 ftlbs / 5.1 Nm

- 1/4" hex quick change drive
- Trigger Start
- T Handle balanced for high volume assembly cell and line production of machine screws
- 2 interchangeable soft-touch grip sizes
- Adjustable reverse lever for true one-hand left or right operation



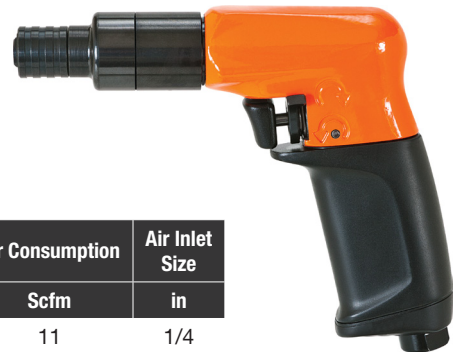
Model	Torque Range Max (nm)	Torque Range Max (ft/lb)	Free Speed r/min	Length in	Weight		Air Consumption Scfm	Air Inlet Size in
	Max Nm	Max Ft Lb			Lb	kg		
19TTS02Q	2.1	1.5	2800	5.8	1.19	0.54	11	1/4
19TTS03Q	2.9	2.1	1900	6.1	1.19	0.54	11	1/4
19TTS04Q	4.5	3.3	1100	5.8	1.19	0.54	11	1/4
19TTS05Q	5.1	3.7	660	6.1	1.19	0.54	11	1/4

General: Tool performance rated at 90 psi (620kPa).
Standard Equipment:
Operating instructions & service manual
Suspension bail

19 Series - Pistol Grip - Stall - "P" Handle - Trigger Start

Up to 3.7 ftlbs / 5.1 Nm

- 1/4" hex quick change drive
- Trigger Start
- P Handle shaped so force can be applied for prevailing torque fasteners
- 2 interchangeable soft-touch grip sizes
- Adjustable reverse lever for true one-hand left or right operation



Model	Torque Range Max (nm)	Torque Range Max (ft/lb)	Free Speed r/min	Length in	Weight		Air Consumption Scfm	Air Inlet Size in
	Max Nm	Max Ft Lb			Lb	kg		
19PTS02Q	2.1	1.5	2800	5.9	1.17	0.53	11	1/4
19PTS03Q	2.9	2.1	1900	6.1	1.17	0.53	11	1/4
19PTS04Q	4.5	3.3	1100	5.9	1.17	0.53	11	1/4
19PTS05Q	5.1	3.7	660	6.1	1.17	0.53	11	1/4

General: Tool performance rated at 90 psi (620kPa).
Standard Equipment:
Operating instructions & service manual
Suspension bail

88 Series - Pistol Grip - Trigger Start - Sliding Knob Reverse

1.2 - 14.7 ftlbs / 1.7 - 20 Nm

- Compact design increases productivity, saves weight, and is easy to integrate into any assembly environment
- Dependable Clecomatic clutch delivers consistent torque accuracy and repeatability
- Cleco motor is the industry standard for durability
- Easy to repair and maintain, with high parts interchangeability to other Cleco products
- 3/8" Square or 1/4" Quick Release Output



Model	Torque Range				Free Speed r/min	Length in	Weight		Side to Center in	Air Consumption Scfm	Air Inlet Size in
	Min Nm	Max Nm	Min Ft Lb	Max Ft Lb			Lb	kg			
88RSATP-7C-3	1.7	10	1.2	7.3	550	8.9	3.13	1.42	0.81	19.1	1/4
88RSATP-7CQ	1.7	10	1.2	7.3	550	8.9	3.13	1.42	0.81	19.1	1/4
88RSATP-5C-3	1.7	18	1.2	13.2	400	8.9	3.13	1.42	0.81	19.1	1/4
88RSATP-5CQ	1.7	18	1.2	13.2	400	8.9	3.13	1.42	0.81	19.1	1/4
88RSATP-2C-3	1.7	20	1.2	14.7	200	9.6	3.37	1.53	0.81	19.1	1/4
88RSATP-2CQ	1.7	20	1.2	14.7	200	9.6	3.37	1.53	0.81	19.1	1/4

General: Tool performance rated at 90 psi (620kPa).
 Standard Equipment:
 Operating instructions & service manual
 Suspension bail
 All torque springs required to meet indicated torque
 Side handle 861006PT on all models above 8 ftlbs torque capacity

88 Series - Pistol Grip - Push and Trigger Start - Sliding Knob Reverse

1.2 - 14.7 ftlbs / 1.7 - 20 Nm

- Compact design increases productivity, saves weight, and is easy to integrate into any assembly environment
- Dependable Clecomatic clutch delivers consistent torque accuracy and repeatability
- Cleco motor is the industry standard for durability
- Easy to repair and maintain, with high parts interchangeability to other Cleco products
- C-3 3/8" Square or CQ 1/4" Quick Release Output



Model	Torque Range				Free Speed r/min	Length in	Weight		Side to Center in	Air Consumption Scfm	Air Inlet Size in
	Min Nm	Max Nm	Min Ft Lb	Max Ft Lb			Lb	kg			
88RSAPT-7CQ	1.7	10	1.2	7.3	550	9	3.13	1.42	0.81	19.1	1/4
88RSAPT-5C-3	1.7	18	1.2	13.2	400	9	3.13	1.42	0.81	19.1	1/4
88RSAPT-5CQ	1.7	18	1.2	13.2	400	9	3.13	1.42	0.81	19.1	1/4
88RSAPT-2CQ	1.7	20	1.2	14.7	200	9.8	3.37	1.53	0.81	19.1	1/4

General: Tool performance rated at 90 psi (620kPa).
 Standard Equipment:
 Operating instructions & service manual
 Suspension bail
 All torque springs required to meet indicated torque
 Side handle 861006PT on all models above 8 ft lbs torque

MP Series - Positive Clutch Screwdrivers

Up to 11.6 ftlbs

- Great for soft draw applications such as wood or aluminum
- One-hand forward reverse switch
- Rugged metal housing and components outlasts the competition
- Efficient and balanced design maximizes accessibility while minimizing operator fatigue
- Operator push maintains drive, reduces pressure for clutch to slip



Model	Torque Range				Free Speed r/min	Length in	Weight		Air Consumption Scfm	Air Inlet Size in
	Min Nm	Max Nm	Min Ft Lb	Max Ft Lb			Lb	kg		
MP2464	3.3	8.5	0.8	6.2	2800	6.8	2.43	1.10	22	1/4
MP2465	5.1	11.3	0.8	8.3	1800	6.8	2.43	1.10	22	1/4
MP2466	9.6	15.8	0.8	11.6	1100	8.1	3.09	1.40	22	1/4

MP Series - Adjustable Clutch Screwdriver

2.5 - 8.3 ftlbs / 3.4 - 11.3 Nm

- Clutch shut-off adjusted by spring force
- One-hand forward reverse switch
- Rugged metal housing and components outlasts the competition
- Efficient and balanced design maximizes accessibility while minimizing operator fatigue



Model	Torque Range				Free Speed r/min	Length in	Weight		Air Consumption Scfm	Air Inlet Size in
	Min Nm	Max Nm	Min Ft Lb	Max Ft Lb			Lb	kg		
MP2477	3.4	11.3	2.5	8.3	1800	7.8	2.65	1.20	22	1/4

General:
 Air All tools performance rated @ 90psi (620 kPa) air pressure.
 Standard Equipment: Clutch adjustment wrenches
 Owners Manual
 Parts Sheet

MP Series - Versa Clutch Screwdrivers

0.4 - 11.6 ftlbs / 0.6 - 15.8Nm - Adjustable Slip Versa Clutch

- Adjustable slip clutch for general use
- One-hand forward reverse switch
- Rugged metal housing and components outlasts the competition
- Efficient and balanced design maximizes accessibility while minimizing operator fatigue
- Versa Clutch - Allows adjustment of cam overlap to adjust torque output



Model	Torque Range				Free Speed r/min	Length in	Weight		Air Consumption Scfm	Air Inlet Size in
	Min Nm	Max Nm	Min Ft Lb	Max Ft Lb			Lb	kg		
MP2436	0.6	11.3	0.4	8.3	1800	7.8	2.65	1.20	22	1/4
MP2437	0.6	15.8	0.4	11.6	1100	9.1	3.31	1.50	22	1/4

General:
 All tools performance rated @ 90psi (620 kPa) air pressure.
 Standard Equipment:
 Owners Manual
 Parts Sheet

MP Series - Stall Screwdrivers

Up to 10 ftlbs / 13.6 Nm

- Torque is set by adjusting air pressure
- One-hand forward reverse switch
- Rugged metal housing and components outlasts the competition
- Efficient and balanced design maximizes accessibility while minimizing operator fatigue



Nutrunners & Screwdrivers

Model	Torque Range Max (nm)	Torque Range Max (ft/lb)	Free Speed r/min	Length in	Weight		Air Consumption Scfm	Air Inlet Size in
	Max Nm	Max Ft Lb			Lb	kg		
MP2452	7.2	5.3	2800	5.7	2.18	0.99	22	1/4
MP2453	8.3	6.2	1800	5.7	2.18	0.99	22	1/4
MP2454	13.6	10	1100	7	2.87	1.30	22	1/4

General:
 All tools performance rated @ 90psi (620 kPa) air pressure.
 Standard Equipment:
 Owners Manual
 Parts Sheet